



Aircraft Industries



www.let.cz / pps@let.cz / +420 572 817 664
Aircraft Industries, a.s. / Na Záhonech 1177 / Kunovice 686 04 / Czech Republic

SERVICE BULLETIN

SB No. **L-410/061b**

Aeroplane Type: **L-410**

Revision No. **1**

Date of Issue: **May 30, 2023**

The technical content of this document is approved under the authority of the DOA ref. EASA.21J.119.

Classification: Recommended

Subject: Securing of a door handle slotted set screw.

Supersedure: Service bulletin L-410/061b Revision 1 supersedes previous bulletin L-410/061b.

1. PLANNING INFORMATION

A. APPLICABILITY

L-410 UVP – Turbolet, L 410 UVP-LW, L-410 UVP-E, L 410 UVP-E-LW, L 410 UVP-E9,
L 410 UVP-E20, L-420 aeroplanes.

B. CONCURRENT REQUIREMENTS

None.

C. REASON

Securing of a door handle slotted set screw against spontaneous loosening.
Revision 1 adds securing of a sliding door handle slotted set screw.

D. COMPLIANCE TIME

As per operator's requirement.

E. MANPOWER

Supposed Man-hours: 1 M-hour

F. MATERIAL

Will be delivered by the aeroplane manufacturer Aircraft Industries, a.s., 686 04 Kunovice,
Czech Republic based on order.

2. IMPLEMENTATION INFORMATION

A. PREPARATORY WORK

None.

B. CHECK OR INSPECTION

None.

C. DISASSEMBLY

- Unscrew the door handle slotted set screws one by one, Dwg No. B522 185N of the entrance or sliding door (if installed), front door and emergency exit/s (if installed).

D. ASSEMBLY

- Apply Loctite 222 threadlocker or equivalent on a slotted set screw according to the MM, chap. 020.20.00 and screw it in. Secure slotted set screws of outer and inner handles. Use material pos. 1 of point 3.A. of this bulletin.

E. TESTS

1. Ground Tests

None.

2. Flight Tests

None.

F. COMPLETION WORK

None.

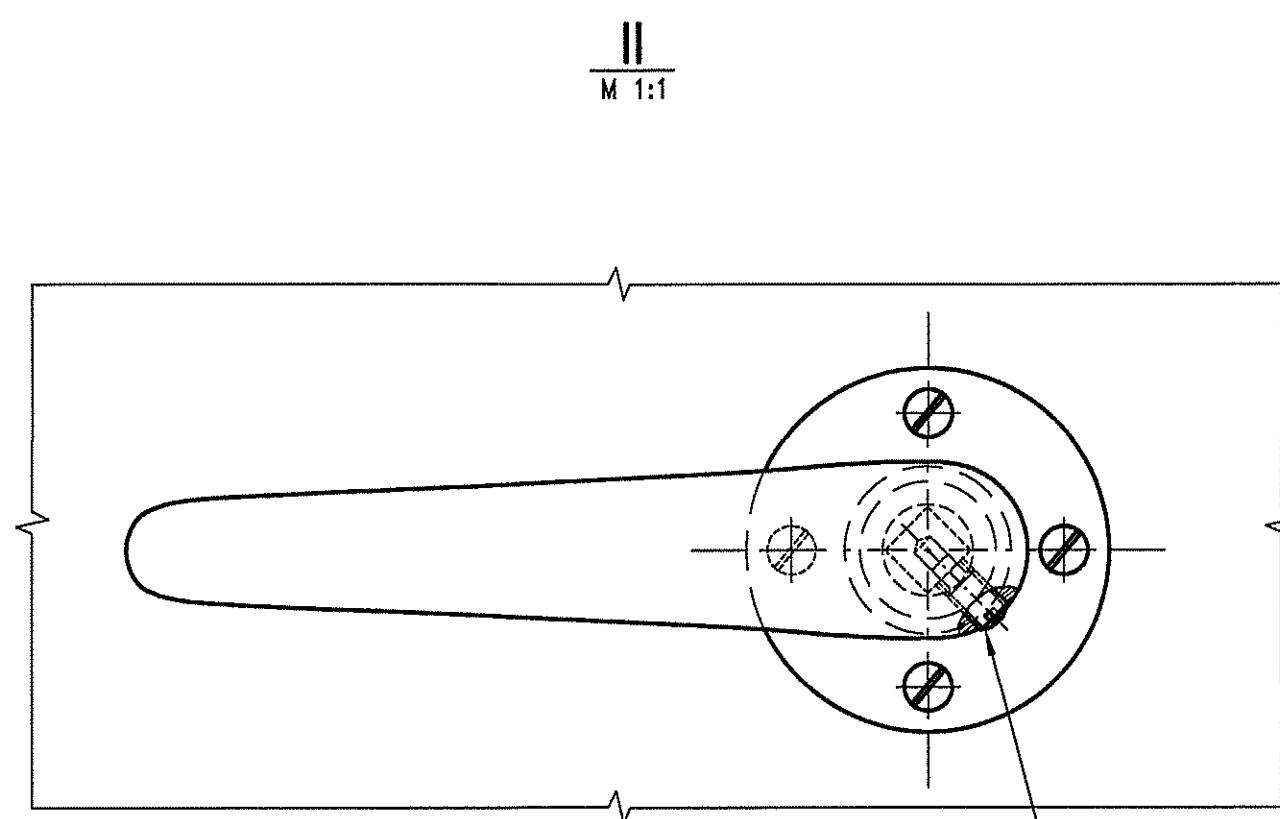
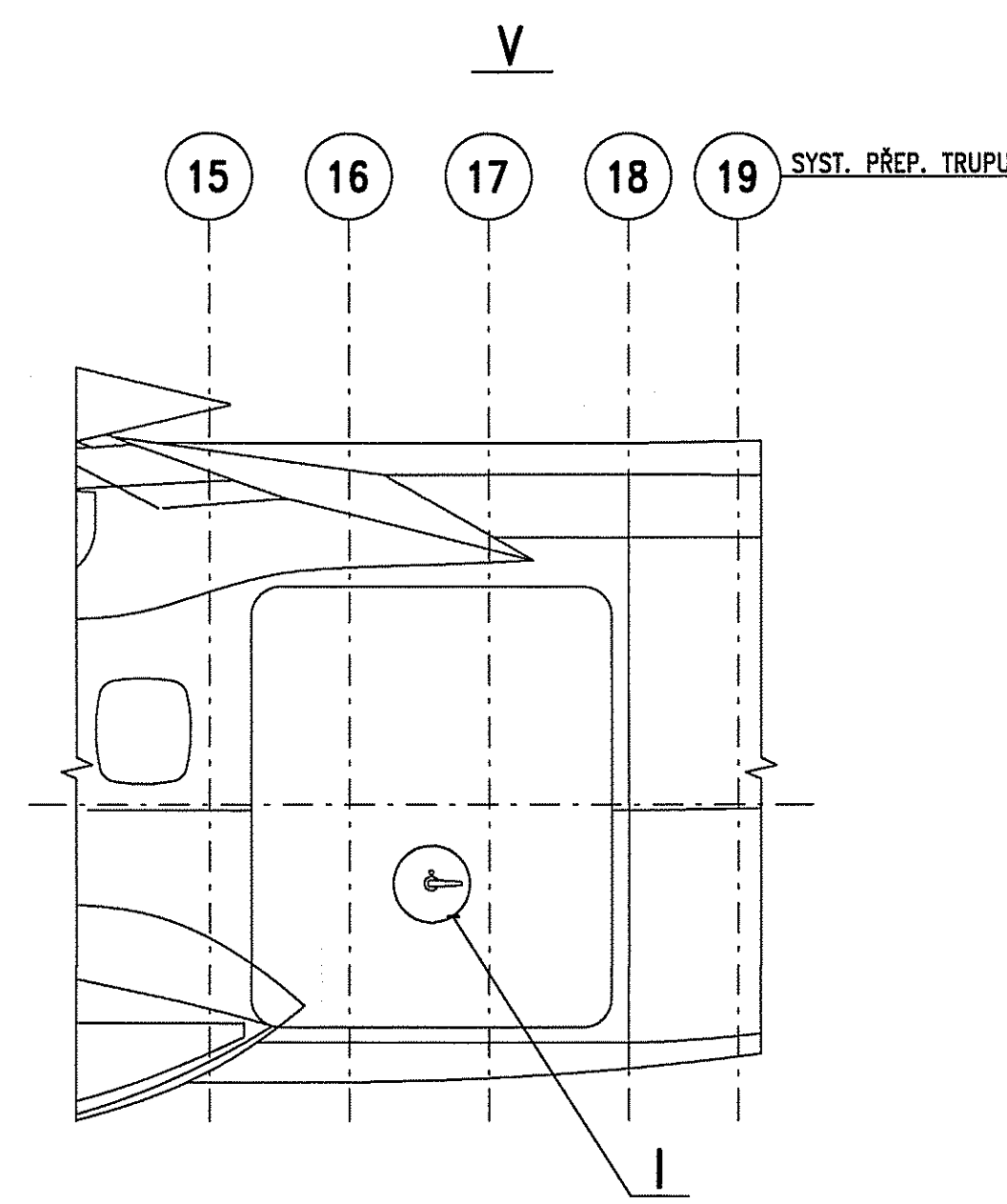
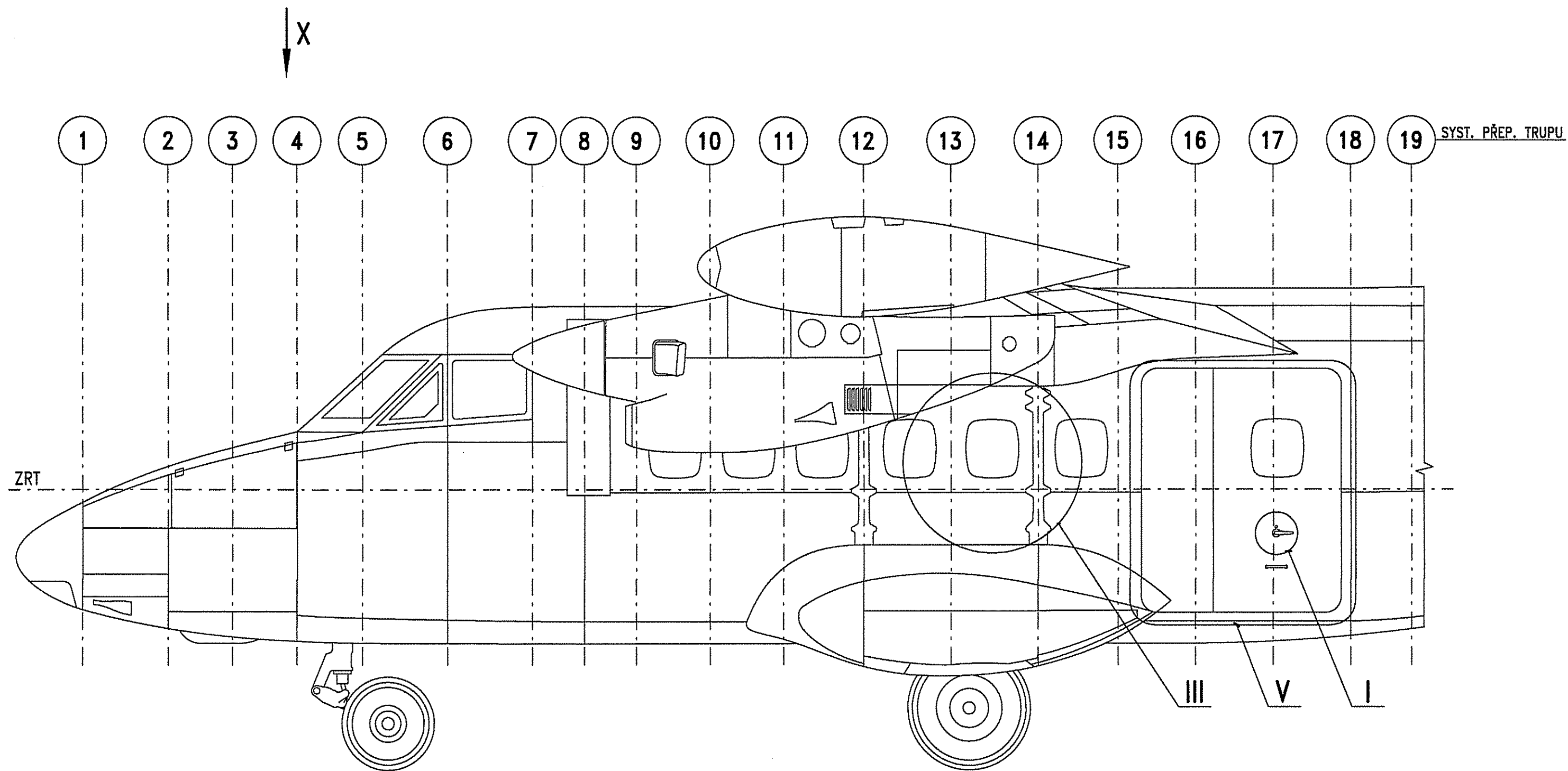
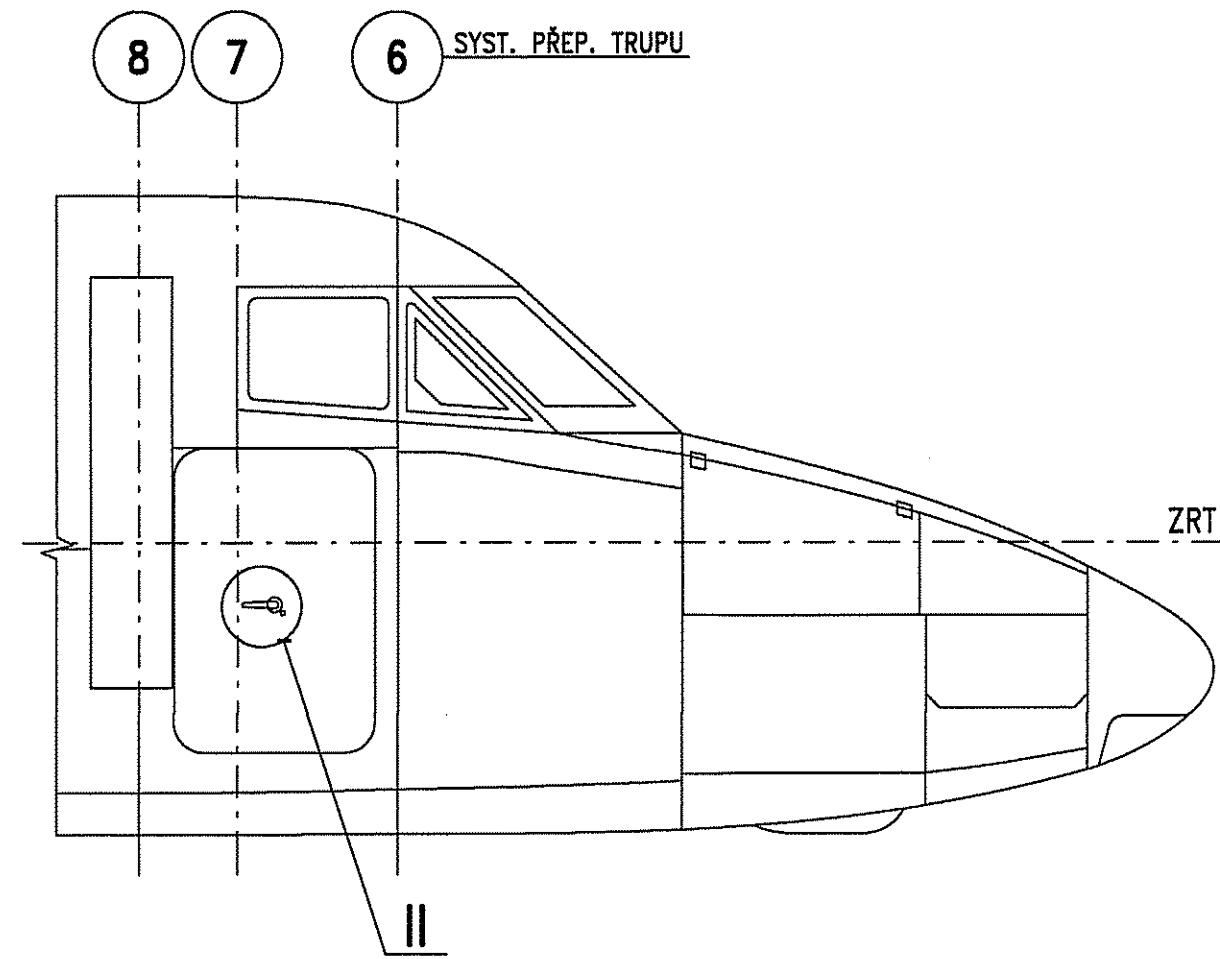
3. BILL OF MATERIAL

A. MATERIAL SUBJECT TO SPECIAL CONDITIONS DURING TRANSPORT

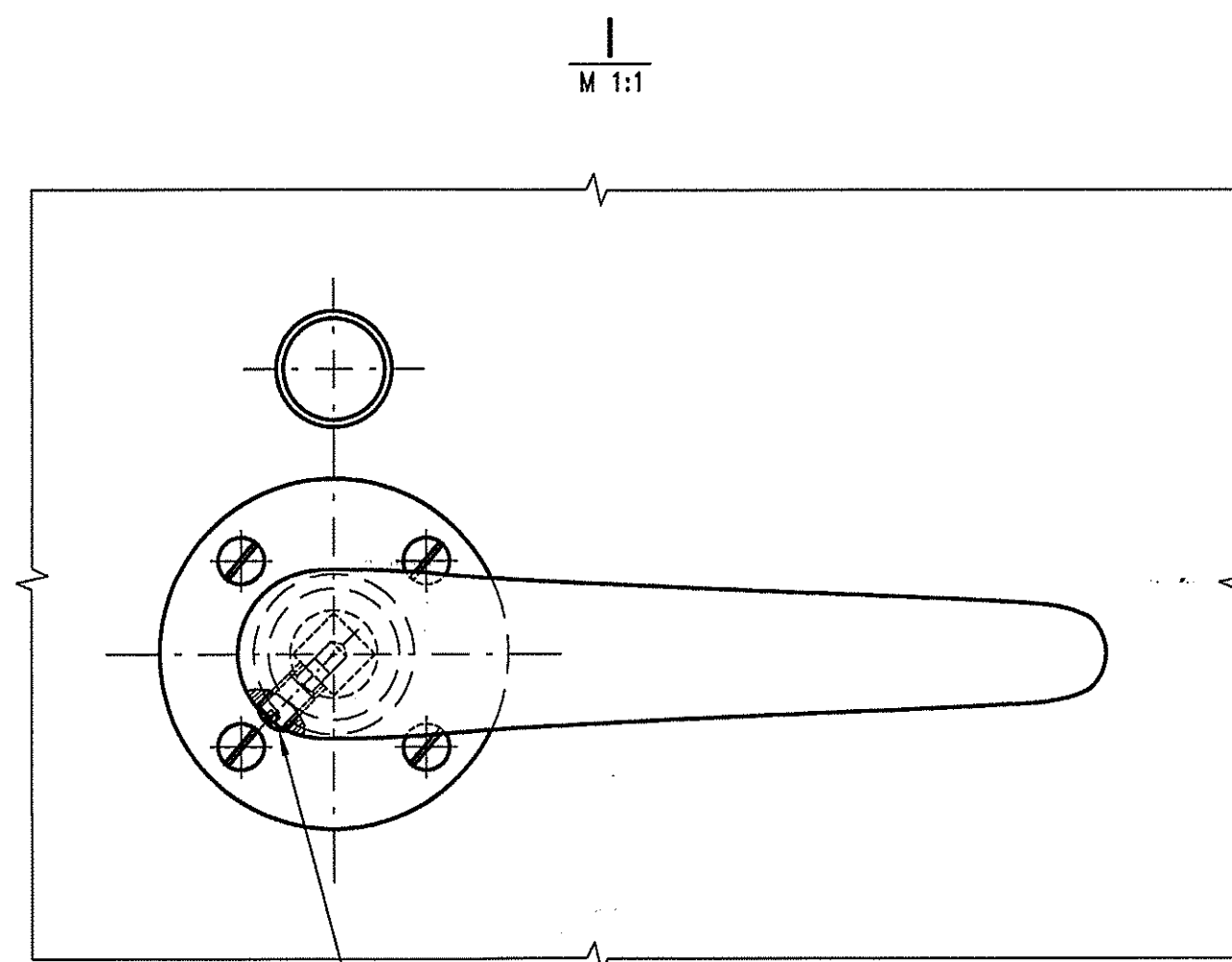
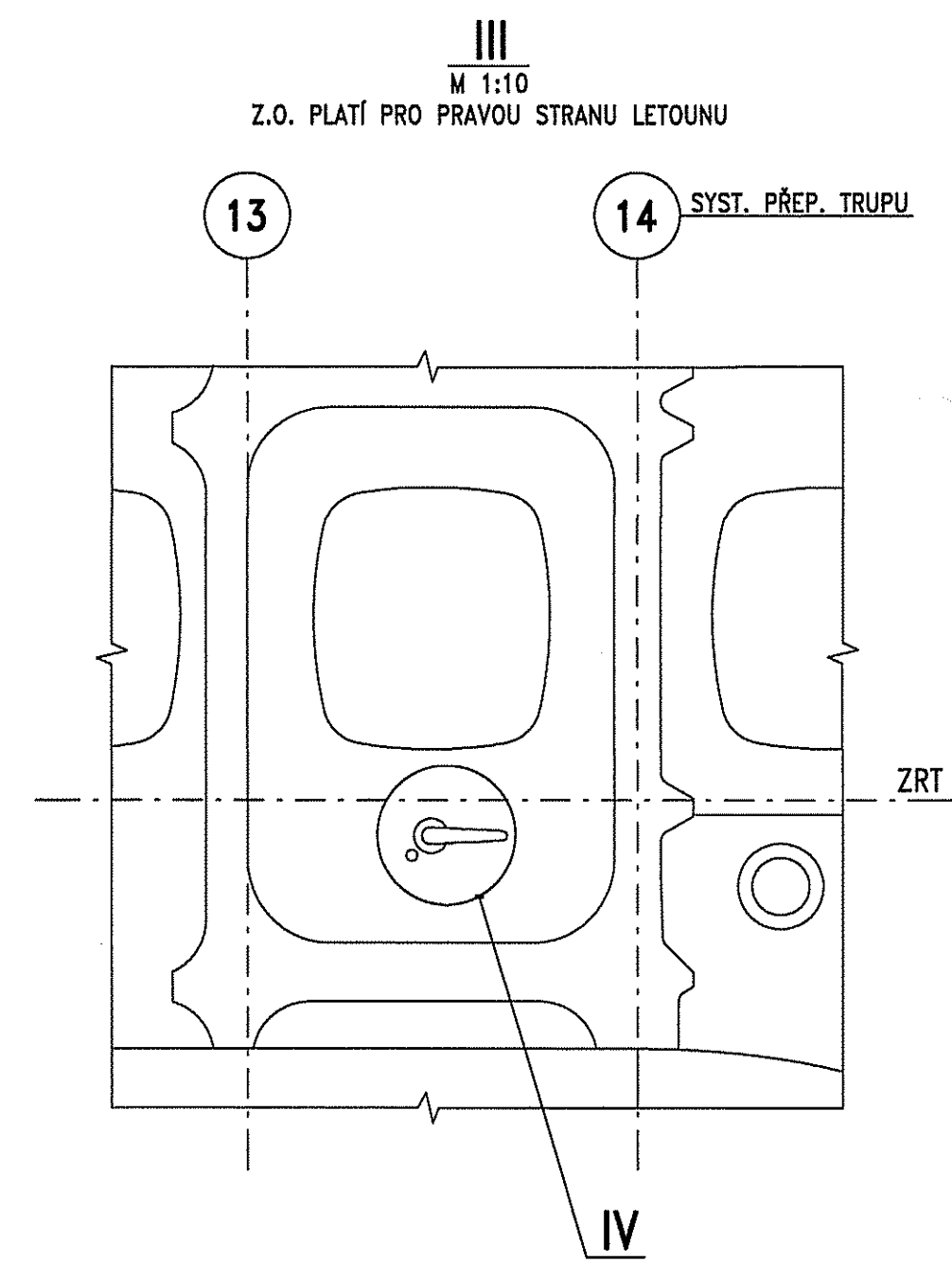
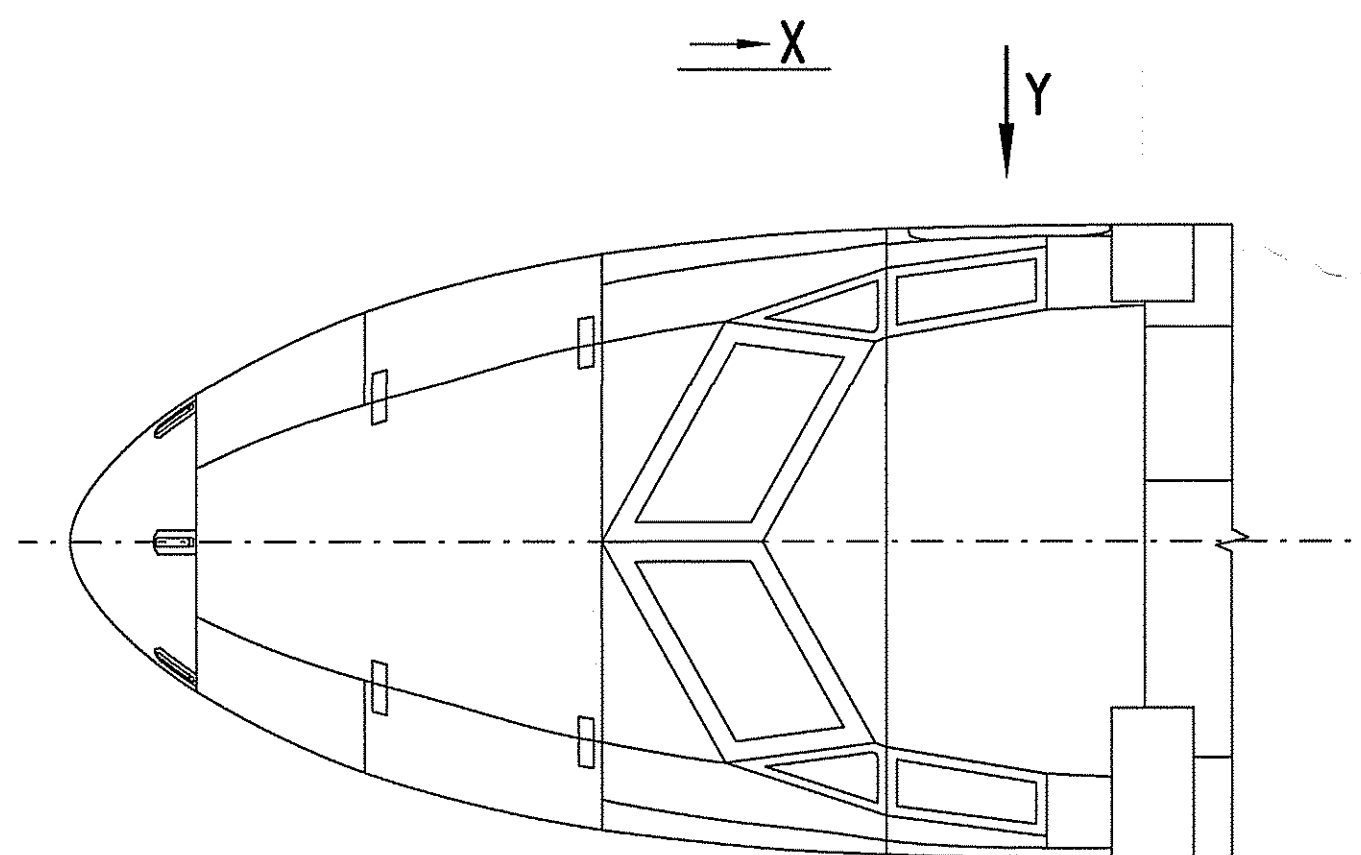
Pos.	Nomenclature	Name	Pcs/Acft
1	82177515	Loctite 222	10 ml

4. RECORD IN THE AEROPLANE LOGBOOK

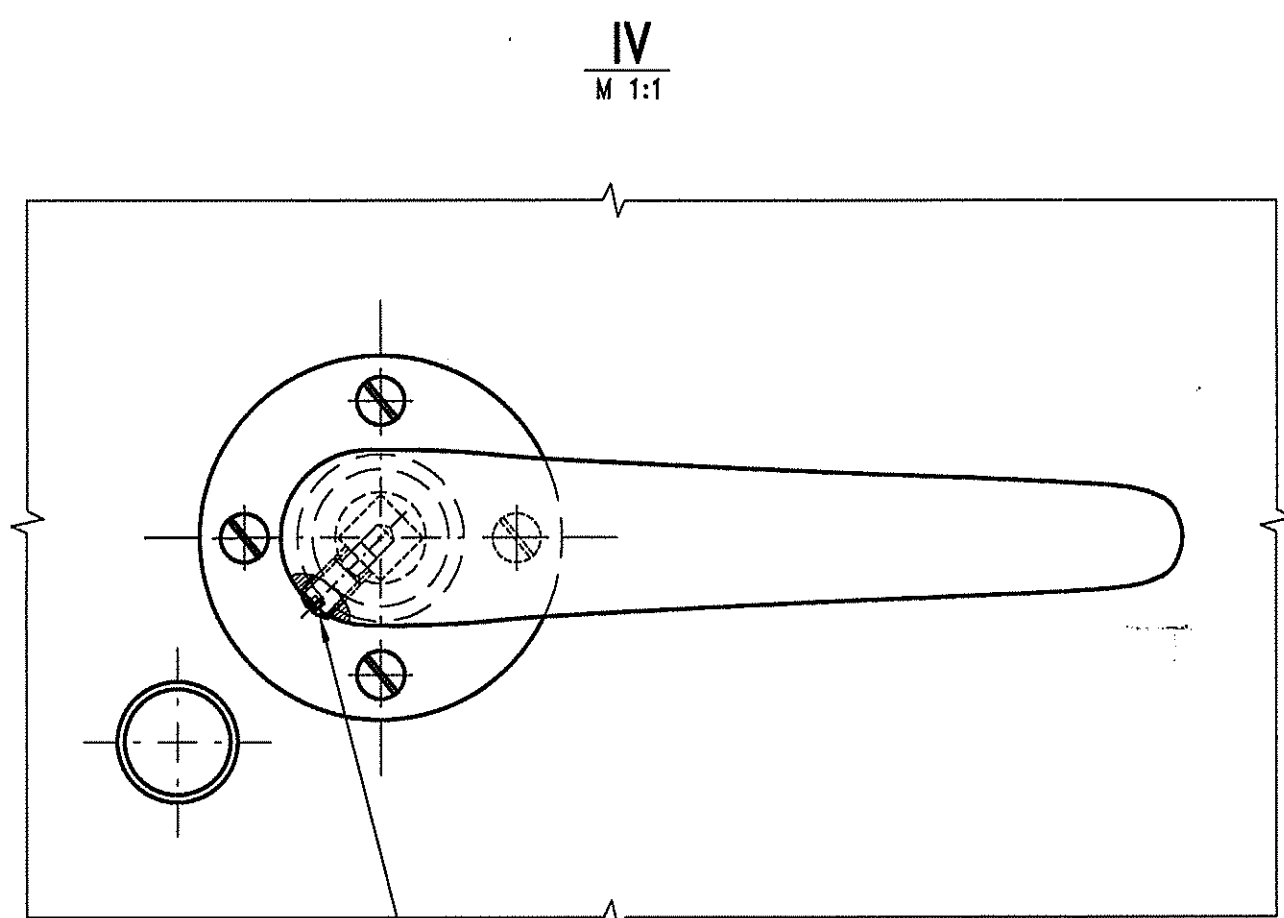
Record implementation of this L-410/061b Revision 1 Service Bulletin.



ŠROUB POJISTIT LEPIDLEM LOCTITE 222
PLATÍ I PRO POJISTĚNÍ VNITŘNÍ KLIKY



ŠROUB POJISTIT LEPIDLEM LOCTITE 222
PLATÍ I PRO POJISTĚNÍ VNITŘNÍ KLIKY



ŠROUB POJISTIT LEPIDLEM LOCTITE 222
PLATÍ I PRO POJISTĚNÍ VNITŘNÍ KLIKY

**ORIGINÁL
ČERVENĚ**

3. DETAIL V PLATÍ PRO LETOUNY S INSTALOVANÝMI ODSUVNÝMI DVEŘEMI
2. DETAIL III PLATÍ PRO LETOUNY S INSTALOVANÝMI NOUZOVÝMI VÝCHODY
1. SYSTÉM TRUPU B510 970X...

		Průměr: \varnothing Délkové rozměry: mm Netol. rozměry: L410 - P002	
Materiál: ---		Index: ZK8061954	
Navrh: ---		Datum: 4.5.23	
Kontroloval: 11.5.23		Podpis: [Signature]	
Stalika: ---		Změna: ---	
Opava povrchu: ---		2D CAD: B522185N_A 3D CAD: ---	
Datum: 4.5.23		Typ: L410	
Podpis: [Signature]		ATA: 52	
Materiál: NENÍ		Název: POJISTĚNÍ KLIKY DVEŘÍ	
Norm. ref.: 11.5.2023 F. Krmčák		Číslo hmoty: ---	
Schválil: 11.5.23 M. Štěcha		Číslo výkresu: ---	
		Index: A	
		Kategorie: S	
		List: 1	